

Vim + Elevance Clinical Data Exchange Workflow

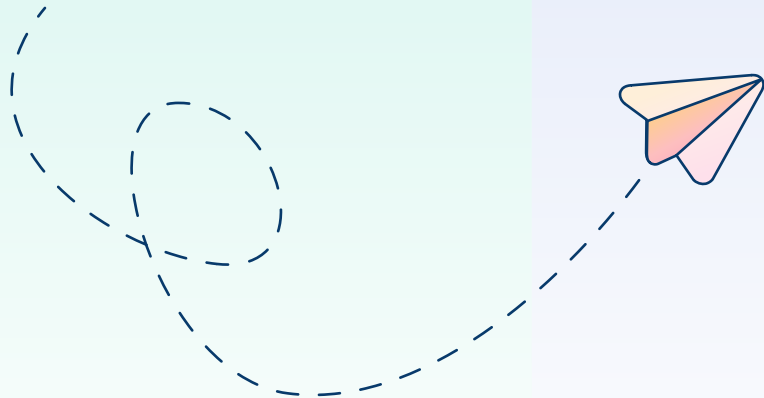


We are here

Step 1

Elevance sends request for member charts.

Elevance requests list of patient charts needed for desired use cases.



Step 2

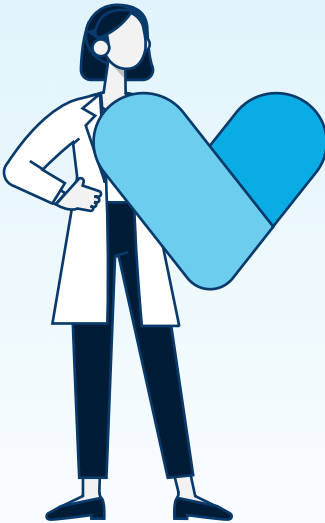
PROVIDER GROUP / CLINIC activates and installs Vim Connect.

Step 3

PROVIDER GROUP / CLINIC selects users to have Vim Data Exchange installed in their Vim Connect hub (this will work as a background application rather than an active application requiring user action).

Step 4

PROVIDER GROUP / CLINIC receives the patient request from **VIM** through Vim Connect and has the opportunity to review it and reject any data disclosure if needed (see terms for details).



Step 4a

VIM pulls member charts from provider EHR during active user sessions - this happens in the background with zero disruption to your users!

Step 5

VIM shares extracted data securely with Elevance.



Once our data exchange product is enabled, users and clinics do not need to “do” anything - our technology works in the background during active user sessions to pull the relevant patient charts.

Users can keep working with Vim and/or the EHR without interrupting their workflow, and focus on providing optimal patient care



To learn more about outputs you can receive (receipts / reports / charts), **please contact Vim**